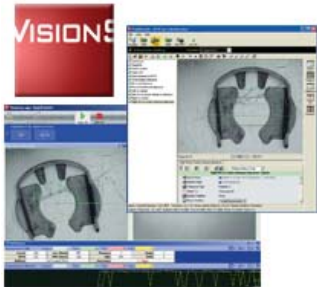


Visionscape is a comprehensive line of machine vision system solutions, with total scalability from smart camera systems to PC-based solutions. Visionscape software provides all the elements required for fast and efficient development and deployment of advanced machine vision applications in any industrial environment.

### Visionscape Software



#### ■ FrontRunner Interface

“Engineering” GUI provides a visual approach to application development, training and evaluation using an intuitive tree structure for maximum flexibility.

#### ■ AppRunner Interface

“Monitoring” GUI displays run time images, graphics and results; same data also available in a web-based smart camera HMI.

#### ■ GigE

Camera interface standard using Gigabit Ethernet communication protocol to allow fast image transfer using standard network components and long cable lengths.

#### ■ Intellifind

Geometric pattern match tool for robust pattern location and pattern recognition in noisy images; includes rotation and scale measurement.

### Visionscape Hardware: PC-Based Machine Vision

- Scalable line of frame grabbers supports flexible interfaces of high speed, high resolution analog or digital cameras with on-board support for digital I/O.

**Benefits: Multiple cameras, high speed applications**



#### System Components:

- Visionscape software
- Visionscape frame grabber
- Analog or digital camera
- C-mount lens and extension tube
- Camera cable
- Input/output modules
- I/O connection accessories
- NERLITE lighting

### Visionscape Hardware: GigE Machine Vision

- Interfaces multiple Gigabit Ethernet cameras from VGA to 5 megapixel resolution, including low cost CMOS and color cameras.

**Benefits: Lower cost, fewer system components, longer cables, smaller footprint, power over Ethernet**



#### System Components:

- Visionscape software
- Visionscape GigE camera
- C-mount lens and extension tube
- Network components
- NERLITE lighting

### Visionscape Hardware: Smart Camera Vision System

- Cost-effective and easily deployed solution in a compact form with all the powerful tools and features of Visionscape software, plus support for EtherNet/IP and a web-based HMI.

**Benefits: Compact shape, low cost and quick deployment, application portability to PC-based systems, built-in digital I/O**



#### System Components:

- Visionscape smart camera and integrated software
- C-mount lens and extension tube
- Ethernet cable
- Power cable
- NERLITE lighting

**Visionscape Hardware: I-PAK® Packaging Inspection System**

- Selection of powerful machine vision tools for a broad range of packaging inspection applications. Available in multiple configurations.

**Benefits: Flexible implementation, meets industry specifications (21 CFR Part 11)**



**System Components:**

**I-PAK SK**

- Visionscape I-PAK software
- Visionscape frame grabber
- Cameras, cables, NERLITE lighting

**I-PAK SE**

- Turnkey system within stainless enclosure
- Mounting accessory
- Cameras, cable, NERLITE lighting

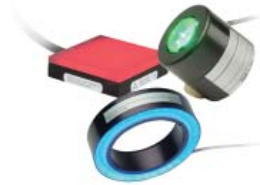
**I-PAK HE**

- Visionscape smart camera and integrated I-PAK software
- NERLITE lighting, Direct Connect Pharma Light

**Lighting and Accessories**

■ **NERLITE® Lighting**

Lighting and imaging systems designed specifically for machine vision, allowing reliable performance in any imaging application.



■ **Lenses**

Standard C-mount lenses, filters, and spacers are available for use with either an external camera or with the Visionscape smart camera.



■ **Cameras**

Analog VGA and SXGA cameras are available and support C-mount lenses.



■ **Cables and Mounting**

Complete selection of cables, mounting hardware, power supplies, calibration targets, and other accessories are available.



■ **I/O Modules**

Enable the use of discrete inputs and/or outputs with a PC that has Visionscape boards installed.



**MICROSCAN®**

[www.microscan.com](http://www.microscan.com)

**Product Information:**

[info@microscan.com](mailto:info@microscan.com)

**Auto ID Support:**

[helpdesk@microscan.com](mailto:helpdesk@microscan.com)

**Vision Support:**

[visionsupport@microscan.com](mailto:visionsupport@microscan.com)

**NERLITE Support:**

[nerlitesupport@microscan.com](mailto:nerlitesupport@microscan.com)